



# Validating Forest Replanting Rates in Vietnam



## PROJECT DESCRIPTION:

An international wood chip trader required independent verification of **Temporarily Unplanted Land (TUP)** estimates in Central Vietnam to assess potential impacts on future wood supply and export capacity. The scope included multi-year imagery analysis across **3 provinces in central Vietnam**.



## THE CHALLENGE:

National Forest Inventory (NFI) data indicated extensive areas of **delayed replanting** following harvest operations. The client needed to determine whether these figures accurately reflected on-the-ground conditions.



## APPROACH:

Sylvametrics combined **time-series satellite imagery** analysis with targeted **field verification** across three provinces in Central Vietnam. Randomly sampled harvest sites were assessed to validate replanting timelines, stocking levels, and harvest cycle patterns.



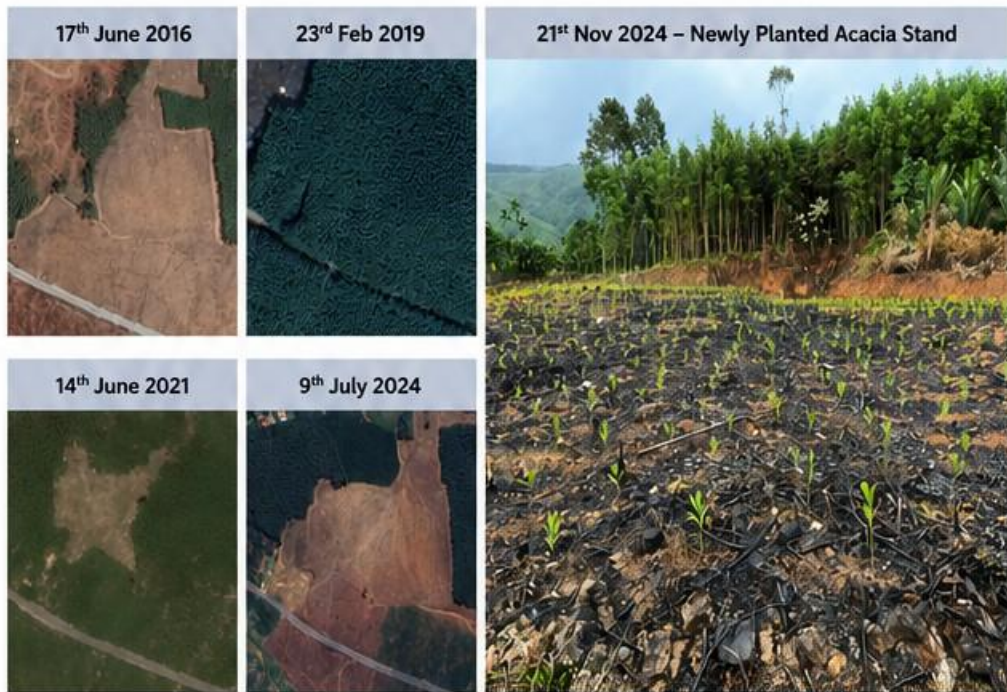
## KEY FINDINGS:

The assessment demonstrated that replanting activity occurred **far more rapidly and consistently** than suggested by inventory data and remote imagery alone. Field observations confirmed **substantially higher stocking rates** across recently harvested sites.



## BUSINESS IMPACT:

The study enabled the client to **improve confidence** in future wood supply forecasts, **refine harvest planning** assumptions, and better assess **long-term export potential** in the region.



Independent field verification revealed that replanting in Central Vietnam occurs more rapidly and consistently than suggested by inventory data and remote imagery—resulting in higher stocking rates and stronger confidence in future wood supply forecasts.